

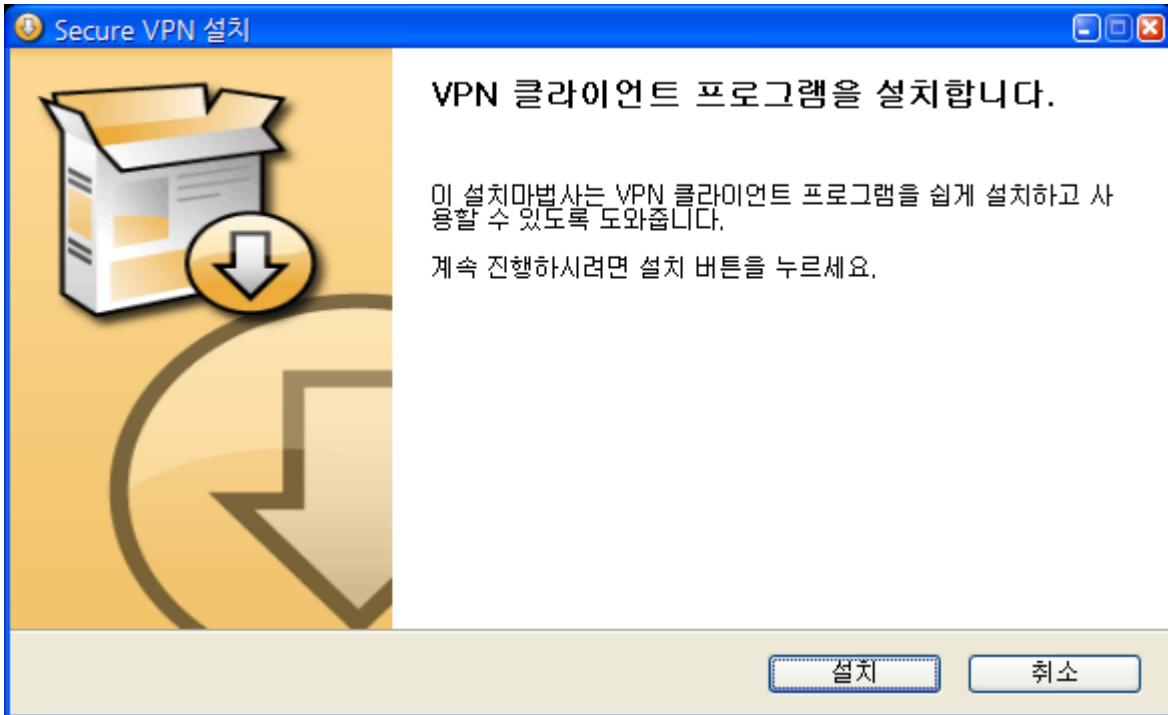
IPMI-VPN 사용안내

1. VPN Client 설치
2. VPN 접속
3. Web browser 를 통한 IPMI 접근
 - a. 관리자 패스워드 변경방법

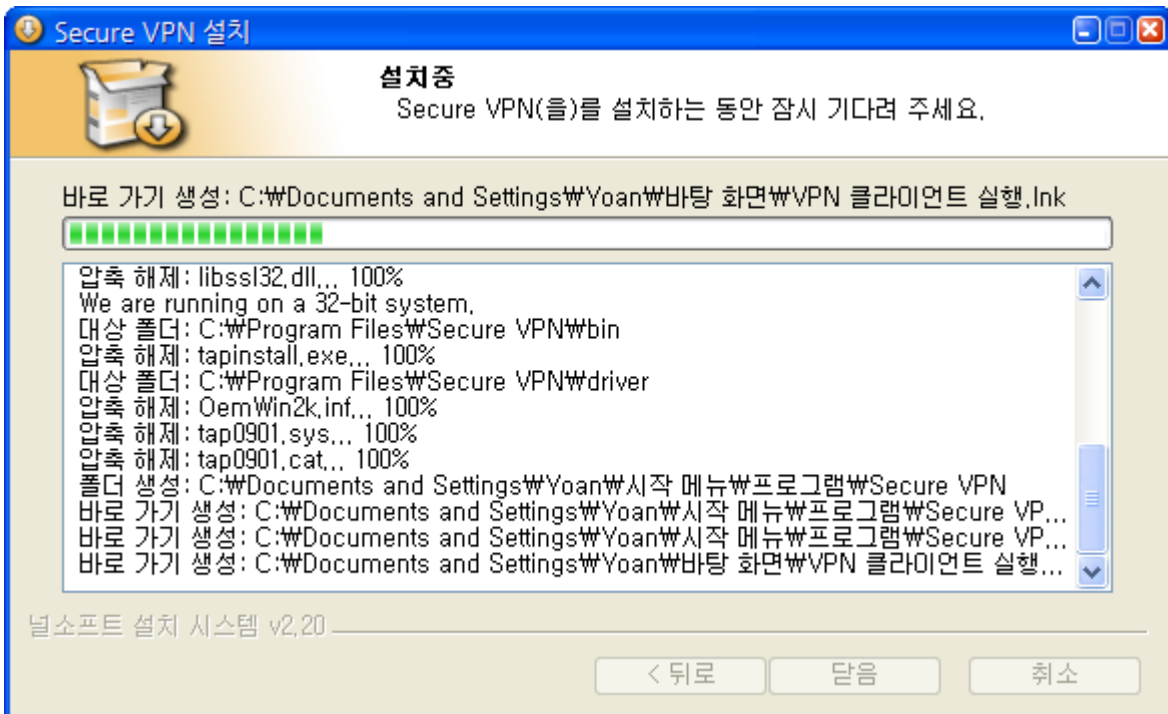
• VPN Client 설치

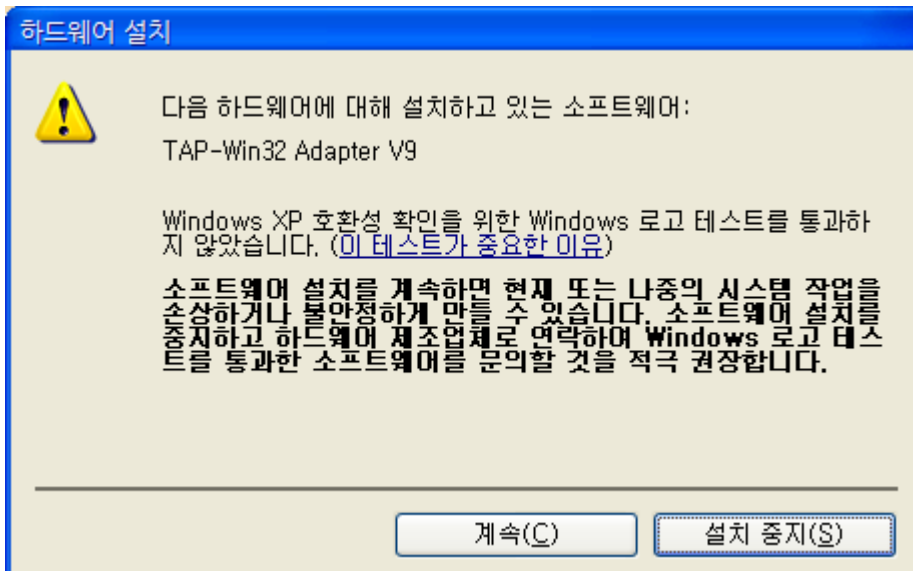


SecureVPN-Setup.exe 을 실행합니다.

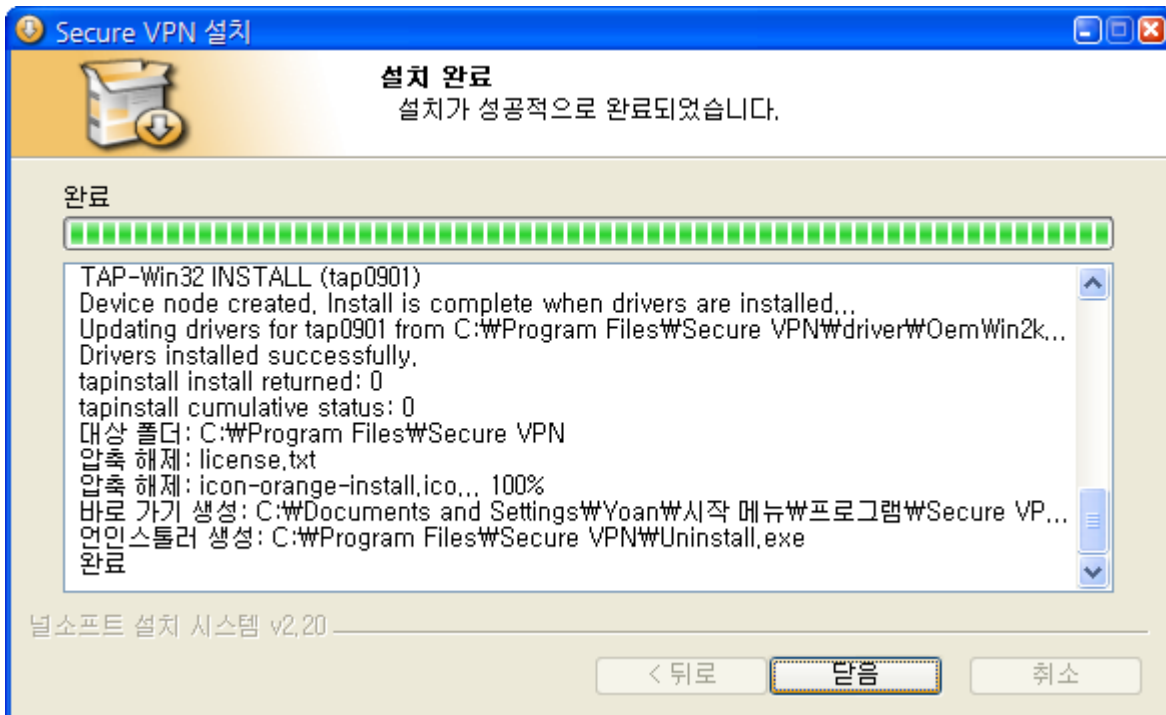


설치





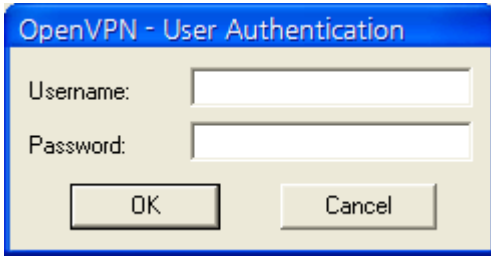
이 화면이 나올 경우 계속을 누름.
(XP의 호환성 확인이 되지 않아서 나오는 창)



설치 완료가 되면 VPN 프로그램이 실행이 됩니다.

- VPN 접속

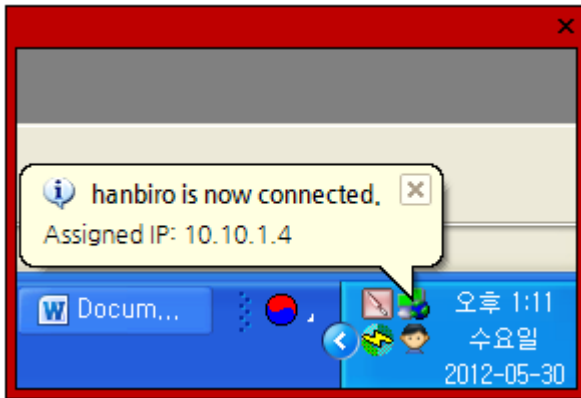
바탕화면에 생성된  아이콘을 실행합니다.



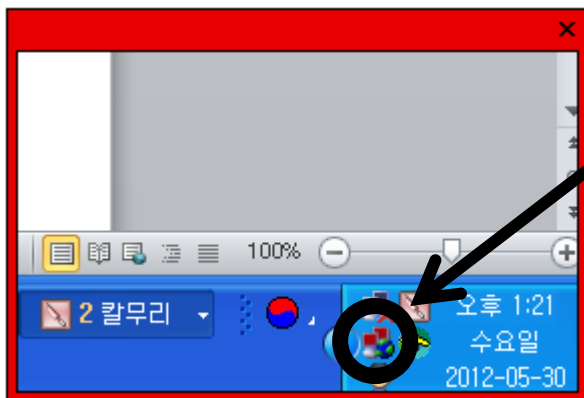
할당받은 ID 와 Password 를 입력합니다.



OK



정상적으로 연결되었을 때의 화면. (트레이 아이콘이 초록색으로 활성화)



연결되지 않았을 때의 화면.

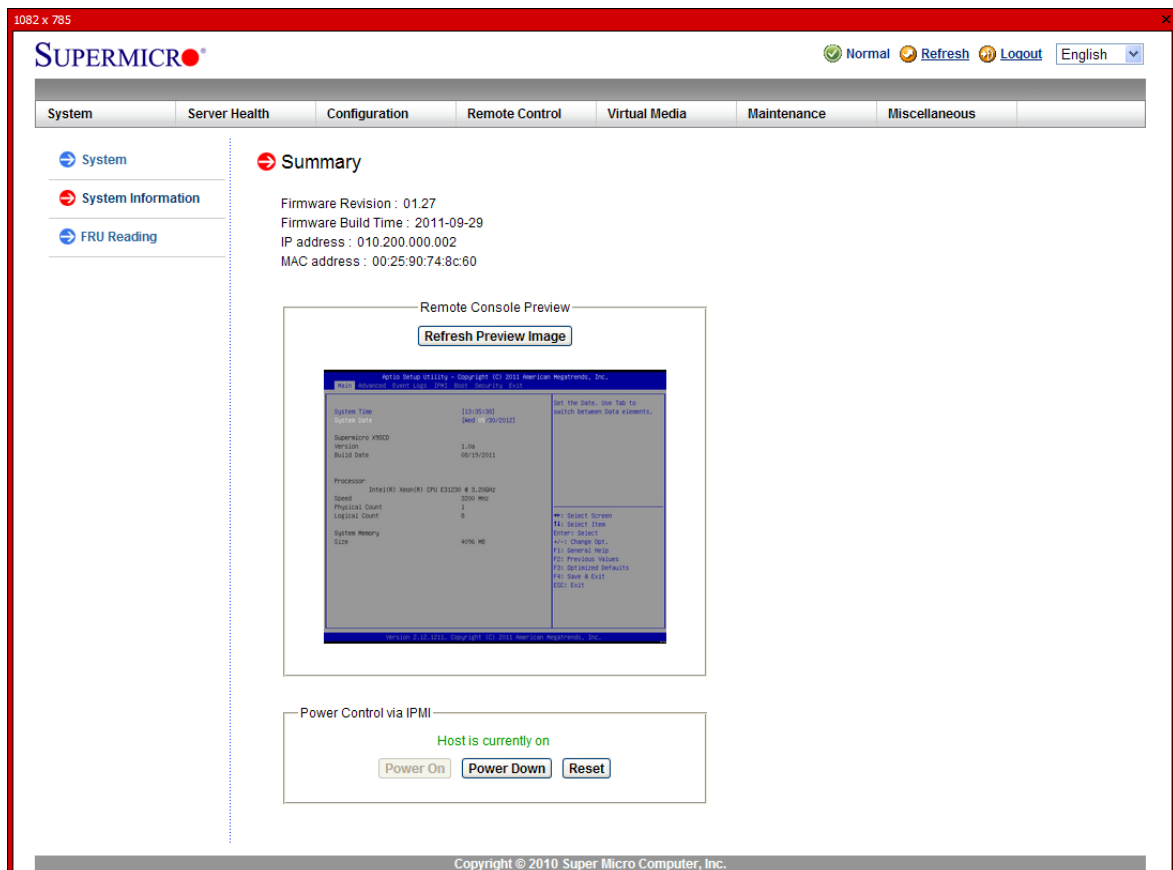
연결이 되지 않았을 경우 로그인창이 다시 활성화 되며 트레이아이콘은 붉은색으로 표시됩니다.

- Web browser 를 통한 IPMI 접근

웹브라우저주소창에 할당받은 IPMI 사설 아이피를 입력합니다.

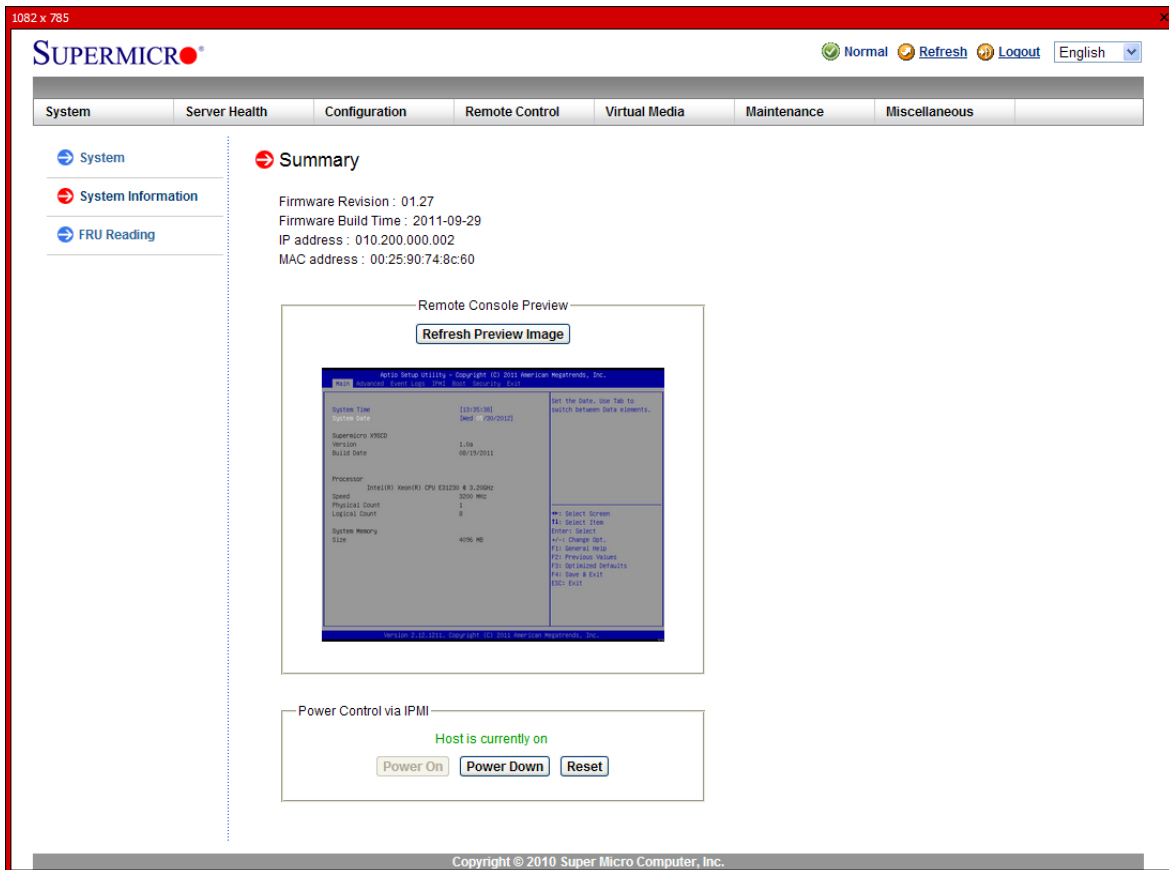


IPMI LOGIN 페이지. (기본 접속 정보 아이디:ADMIN 패스워드:ADMIN)



로그인 후 기본메인 화면

- 서버 전원관리 방법



로그인 후 기본메인 화면의, Summary 아래 부분을 보시면 Power Control via IPMI 가 있습니다. 3 개 기능을 지원합니다.

1. Power On : 전원 ON
2. Power Down : 전원 OFF
3. Reset : 재부팅기능

- VPN 접속정보 변경방법 (관리자계정 패스워드 변경)

The screenshot shows the SUPERMICR web interface. At the top, there is a navigation bar with the SUPERMICR logo, a status indicator (Normal), and buttons for Refresh, Logout, and a language dropdown (English). Below this is a menu bar with tabs for System, Server Health, Configuration (highlighted with a red box), Remote Control, and Virtual Media. A secondary row of tabs includes Maintenance and Miscellaneous (with a red '1' next to it). On the left side, there is a vertical sidebar menu with various configuration options: Configuration (with a red arrow icon), Alerts, Date and Time, LDAP, Active Directory, RADIUS, Mouse Mode, Network, Dynamic DNS, Remote Session, SMTP, SSL Certification, Users (highlighted with a red box and a red '2' next to it), Port, IP Access Control, and Fan Mode. The main content area is titled 'Configuration' and contains a list of configuration options with brief descriptions:

- Alerts : Add, edit or remove alert destinations
- Date and Time : Configure Date and Time Settings
- LDAP : Check the box below to enable LDAP authentication and enter the required information to access the LDAP server. Press the Save button to save your changes.
- Active Directory : Configure settings to authenticate and access the Active Directory server
- RADIUS : Configure settings to authenticate and access the RADIUS server.
- Mouse mode : Configure the mouse mode for remote console
- Network : See the MAC address or change network settings, including dynamic and static IP assignment
- Dynamic DNS : Configure dynamic update properties for Dynamic DNS
- Remote Session : Configure Remote session settings for virtual media
- SMTP : Configure the SMTP email server
- SSL Certificate : The dates for the default certificate and private key are shown below. To upload a new SSL certificate, use the Browse button to navigate to the certificate and press the Upload button.
- Users : Add, edit, or remove users
- Port : Configure the port number of the services
- IP Access Control : Add, edit or remove IP access rules
- Fan Mode : Configure the fan mode

Copyright © 2010 Super Micro Computer, Inc.

Configuration > Users 을 클릭합니다.

10.200.0.2/cgi/url_redirect.cgi?url_name=mainmi

Hanbiro iPhone Shopping Portal Study Life Torrent 번역

SUPERMICR Normal Refresh Logout English

System Server Health Configuration Remote Control Virtual Media Maintenance

Miscellaneous

- Configuration
- Alerts
- Date and Time
- LDAP
- Active Directory
- RADIUS
- Mouse Mode
- Network
- Dynamic DNS
- Remote Session
- SMTP
- SSL Certification
- Users**
- Port
- IP Access Control
- Fan Mode

User List

The list below shows the current list of configured users. If you would like to delete or modify a user, select their name in the list and press Delete User or Modify User. To add a new user, select an unconfigured slot and press Add User.

Number of configured users: 2

User ID	User Name	Network Privilege
1	Anonymous	Reserved
2	ADMIN	Administrator
3	~	Reserved
4	~	Reserved
5	~	Reserved
6	~	Reserved
7	~	Reserved
8	~	Reserved
9	~	Reserved
10	~	Reserved

2

Add User Modify User Delete User

Copyright © 2010 Super Micro Computer, Inc.

ADMIN 계정을 선택하신 후 Modify User 버튼을 클릭합니다.

The screenshot shows the SUPERMICR web interface. The main navigation menu includes System, Server Health, Configuration, Remote Control, Virtual Media, and Maintenance. The left sidebar lists various configuration options, with 'Users' highlighted in red. The 'Modify User' form is displayed, featuring a text box for instructions: 'Enter the new information for the user below and press Modify. Press Cancel to return to the user list.' The form contains the following fields: 'User Name' (ADMIN), 'Change Password' (checked), 'Password' (masked with dots), 'Confirm Password' (masked with dots), and 'Network Privileges' (Administrator). Red annotations highlight the 'Change Password' checkbox (1), the password fields (2), and the 'Modify' button (3). The footer contains the copyright notice: 'Copyright © 2010 Super Micro Computer, Inc.'

Change Password 체크박스를 클릭하여 활성화한 후 변경할 패스워드를 입력합니다.